



LIVERMORE
SCHOOL DISTRICT

SPRING 2021 HANDBOOK

A Guide to School: March 22 - June 10, 2021

A Return to In-Person Instruction



#

strong

www.livermoreschools.org

A MESSAGE FROM SUPERINTENDENT KELLY BOWERS

Starting a New Chapter!

I truly look forward to welcoming preschool and TK-12th grade students for in-person instruction on our campuses this spring! On February 25th, our Board of Trustees unanimously approved my recommendation to officially end school dismissal and return to in-person learning for preschool and TK-12th grade students on Monday, March 22nd while still retaining the distance learning option based on individual family preference.

We have been anticipating and preparing for this return day for many months. Throughout our district, we have put in place health and safety measures and we have developed protocols to prevent the spread of COVID-19. We are grateful to see the improvement in community health that allows us to be able to open our classroom doors.

I would like to take this time to personally and professionally extend my heartfelt thanks to our students, parents and guardians, teachers, nurses, administrators, certificated and classified staff at all levels, as well as our community partners who have sacrificed, given of themselves, and made so many adjustments over these several months, and I sincerely hope everyone will rally together to support each other as we take this important next step so that it goes as smoothly as possible.

I know this transition was made possible due to the hard work, contribution, sacrifice, sheer determination and commitment of everyone who worked to get us to this place. At the beginning of the year, I asked everyone to “Dig deep” and “Persevere” and we have. I am more confident than ever that while we welcome our students back to campus, we will all continue to stay healthy and #LVJUSDstrong!

Kelly Bowers, Ed.D.
LVJUSD Superintendent of Schools



TIMELINE & IMPORTANT DATES

3/10

**Beginning of Trimester 3;
High Schools begin new classes and schedule**

3/22

**Elementary & Middle Schools begin new
schedule;
In-person instruction begins for students
returning to campus**

4/5 - 4/9

Spring Break- No School

6/10

Last Day of School

PLEASE CHECK WEBSITE FOR CURRENT INFORMATION

TABLE OF CONTENTS

Trimester 3 Learning - An Overview	4
School Day Preparations for In-Person & Distance Schedules	5-6
On-Campus Protocols	7-15
Special Education	16-21
Student & Family Support	22-23
◦ Child Nutrition	24-27
◦ Mental Health Support	24
◦ Livermore Learns Parent Education	25-26
Health, Safety & Sanitation	27
Appendix A: LVJUSD Resources	28-31
Appendix B: Additional Resources	32
	33

The information provided takes into account orders set by the State of California Department of Public Health and Alameda County Public Health Department (ACPHD) that the Livermore Valley Joint Unified School District (LVJUSD) must follow. In addition, our plan includes guidelines set by the California Department of Education (CDE).

Please note that this document is subject to change based on current orders set by the State of California and Alameda County Public Health Department.

TRIMESTER 3

LEARNING



Overview

March 22 marks the beginning of a new school structure for all students. Based on family preference, some students will receive a combination of in-person instruction and distance learning, while others will receive all instruction & support through distance learning.

BELL SCHEDULES

Each level (elementary, middle*, and high) has a bell schedule that pertains to **ALL** students regardless of whether they attend in-person or remain in distance. Bell schedules can be found on pages 8-16 in this handbook.

**Please note that middle school schedules are labeled by school as there are slight variations to instructional and support period organization among sites.*

WEDNESDAYS

All students will participate in distance learning on Wednesdays and will end school early for staff professional development.

LUNCH

All students will eat lunch off campus. Students who attend in person are able to receive grab-and-go lunches before leaving campus, while students participating in distance learning are able to receive 7-day meal kits each Friday that provide food for students for the following week. Wednesday meals are available at select school sites for pick up and include additional food for the weekend. Please refer to www.livermoreschools.org/childnutrition for details.

SCHOOL DAY PREPARATIONS

FOR STUDENTS DISTANCE LEARNING



Be on time for class online each day!

- Attendance counts!



Create a learning space that allows you to be focused.

- Set your computer and phone to "Do Not Disturb" to avoid notifications.
- During class, close browser tabs to other websites.
- Put away phone/video game consoles to reduce distractions.
- Consider using headphones to help reduce noise distractions.



Come to online class ready to learn!

- Dress for school
- Keep your camera on and microphone muted unless otherwise instructed.
- Follow the behavior expectations of your school.

SCHOOL DAY PREPARATIONS

FOR STUDENTS ON CAMPUS



Complete your daily health screening online or on your phone before coming to school

- Please call your school's attendance line if your health screening indicates you should stay home.



Mask up!

- Check to make sure you have your face covering before leaving for school.
- If you forget your face covering, your school will provide one for you.
- If driving to school, please put on your face covering before exiting your vehicle.



Don't forget your Chromebook!

- If your child is using a LVJUSD Chromebook or attends a BYOD school, please have your student bring their computer with them to school each day.
- If your student is using a personally-owned device at home, a Chromebook will be provided for them while on campus.



Enter campus at the designated entrances per your school's guidance

- Entrances and exits may have been modified.
- If you have questions about where to enter, please check your school's website or contact your school office.



Follow the physical distancing guidance of 6 feet as you approach campus as well as on campus

SCHOOL DAY STRUCTURE

SCHEDULES

IP	MONDAY, TUESDAY, THURSDAY, FRIDAY (IN PERSON)
8:30-11:15	On Campus Instruction
11:15-12:05	Lunch
12:05-1:30	Asynchronous Learning*

D	MONDAY, TUESDAY, THURSDAY, FRIDAY (DISTANCE)
9:50-11:15	Asynchronous Learning*
11:15-12:05	Lunch
12:05-2:50	Online Instruction

TK/K BELL SCHEDULES

IP/D	WEDNESDAY (ALL STUDENTS)
8:30-9:00	Online Class Meeting
9:00-11:15	Asynchronous Learning*
11:15-12:05	Lunch

*Teacher-assigned asynchronous work that could include resource, speech, reading intervention, etc.

TK-K Schedule Information

- Students participating in In-Person Learning (IP) will receive in-person, on-campus instruction in the mornings and complete asynchronous work in the afternoons (M, T, Th, F).
- Students participating in 100% Distance Learning (D) will complete asynchronous work in the mornings and receive online instruction in the afternoons (M, T, Th, F).
- Early dismissal Wednesdays have all students in distance learning. Students will check in online at 8:30am with their teachers and complete teacher-assigned asynchronous work for most of their school day.
- For Grades 1-5, Wednesday afternoons will include science, music or support based on grade level. Your child's teacher will provide details.
- Off campus lunch is from 11:15 am-12:05 pm Monday - Friday.
- Attendance is taken daily for both in-person and distance students.
- Teachers will not be available for individualized meetings or support during a student's asynchronous time on M, T, Th, F as they will be instructing another group of students. Please email your teacher with questions or requests for support.

SCHOOL DAY STRUCTURE

SCHEDULES

IP	MONDAY, TUESDAY, THURSDAY, FRIDAY (IN PERSON)
8:30-11:15	On Campus Instruction
11:15-12:05	Lunch
12:05-2:40	Asynchronous Learning*

D	MONDAY, TUESDAY, THURSDAY, FRIDAY (DISTANCE)
8:40-11:15	Asynchronous Learning*
11:15-12:05	Lunch
12:05-2:50	Online Instruction

GRADE 1-3 BELL SCHEDULES

IP/D	WEDNESDAY (ALL STUDENTS)
8:30-9:00	Online Class Meeting
9:00-11:15	Asynchronous Learning*
11:15-12:05	Lunch
12:05-1:30	Science and/or Support

*Teacher-assigned asynchronous work that could include science, resource, speech, reading intervention, etc.

Grades 1-3 Schedule Information

- Students participating in In-Person Learning (IP) will receive in-person, on-campus instruction in the mornings and complete asynchronous work in the afternoons (M, T, Th, F).
- Students participating in 100% Distance Learning (D) will complete asynchronous work in the mornings and receive online instruction in the afternoons (M, T, Th, F).
- Early dismissal Wednesdays have all students in distance learning. Students will check in online at 8:30am with their teachers and complete teacher-assigned asynchronous work for most of their school day.
- For Grades 1-5, Wednesday afternoons will include science, music or support based on grade level. Your child's teacher will provide details.
- Off campus lunch is from 11:15 am-12:05 pm Monday - Friday.
- Attendance is taken daily for both in-person and distance students.
- Teachers will not be available for individualized meetings or support during a student's asynchronous time on M, T, Th, F as they will be instructing another group of students. Please email your teacher with questions or requests for support.

SCHOOL DAY STRUCTURE

SCHEDULES

IP	MONDAY, TUESDAY, THURSDAY, FRIDAY (IN PERSON)
8:30-11:15	On Campus Instruction
11:15-12:05	Lunch
12:05-2:50	Asynchronous Learning*

D	MONDAY, TUESDAY, THURSDAY, FRIDAY (DISTANCE)
8:30-11:15	Asynchronous Learning*
11:15-12:05	Lunch
12:05-2:50	Online Instruction

GRADE 4-5 BELL SCHEDULES

IP/D	WEDNESDAY (ALL STUDENTS)
8:30-9:00	Online Class Meeting
9:00-11:15	Asynchronous Learning*
11:15-12:05	Lunch
12:05-1:30	Science, Music and/or Support

*Teacher-assigned asynchronous work that could include science, music, resource, speech, reading intervention, etc.

Grades 4-5 Schedule Information


- Students participating in In-Person Learning (IP) will receive in-person, on-campus instruction in the mornings and complete asynchronous work in the afternoons (M, T, Th, F).
- Students participating in 100% Distance Learning (D) will complete asynchronous work in the mornings and receive online instruction in the afternoons (M, T, Th, F).
- Early dismissal Wednesdays have all students in distance learning. Students will check in online at 8:30am with their teachers and complete teacher-assigned asynchronous work for most of their school day.
- For Grades 1-5, Wednesday afternoons will include science, music or support based on grade level. Your child's teacher will provide details.
- Off campus lunch is from 11:15 am-12:05 pm Monday - Friday.
- Attendance is taken daily for both in-person and distance students.
- Teachers will not be available for individualized meetings or support during a student's asynchronous time on M, T, Th, F as they will be instructing another group of students. Please email your teacher with questions or requests for support.

SCHOOL DAY STRUCTURE

SCHEDULES

Middle (Grades 6-8)

Christensen

	MONDAY	TUESDAY	WEDNESDAY		THURSDAY	FRIDAY
	Group A- AM On-Campus Group B- AM Distance Group C- AM Distance	Group A- AM On-Campus Group B- AM Distance Group C- AM Distance	All Groups are Distance		Group A- AM Distance Group B- AM On-Campus Group C- AM Distance	Group A- AM Distance Group B- AM On-Campus Group C- AM Distance
			ODD	EVEN		
7:45-8:20	Per 0 Instruction	Per 0 Instruction	Per 0 Online Support		Per 0 Instruction	Per 0 Instruction
8:25-9:20	Per 2 Instruction	Per 1 Instruction	Per 1 Online Instruction	Per 2 Online Instruction	Per 2 Instruction	Per 1 Instruction
9:25-10:20	Per 4 Instruction	Per 3 Instruction	Per 3 Online Instruction	Per 4 Online Instruction	Per 4 Instruction	Per 3 Instruction
10:25-11:20	Per 6 Instruction	Per 5 Instruction	Per 5 Online Instruction	Per 6 Online Instruction	Per 6 Instruction	Per 5 Instruction
11:20-12:00	Lunch	Lunch	Lunch		Lunch	Lunch
12:00-12:30	Per 1 Online Support/ Work	Per 2 Online Support/ Work	Online Homeroom 12:00-12:25		Per 1 Online Support/ Work	Per 2 Online Support/ Work
12:40-1:10	Per 3 Online Support/ Work	Per 4 Online Support/ Work	Early Dismissal/ Staff PD		Per 3 Online Support/ Work	Per 4 Online Support/ Work
1:20-1:50	Per 5 Online Support/ Work	Per 6 Online Support/ Work			Per 5 Online Support/ Work	Per 6 Online Support/ Work

Middle School Schedule Information


- Students participating in In-Person Learning (IP) will be assigned to either Group A or Group B.
- Students participating in 100% Distance Learning (D) will be assigned to Group C.
- Group A students receive instruction in person, on-campus on Monday and Tuesday mornings. Group A participates in distance learning Wednesday - Friday.
- Group B students receive instruction in person, on-campus on Thursday and Friday mornings. Group B participates in distance learning Monday - Wednesday.
- Group C students receive instruction online Monday - Friday mornings.
- All students participate in online support on M, T, Th, F afternoons, as directed by their teacher or when needed. Teachers will be available online during this time.
- On Wednesdays, all students participate in distance learning. Morning online instruction rotates between odd and even schedules each week. On odd weeks, students attend periods 1, 3, and 5 and on even weeks, students attend periods 2, 4, and 6. Weekly Wednesday homeroom is from 12-12:25 pm. (Check school calendar for current information.)
- Off campus lunch is from 11:20 am-12:00 pm Monday- Friday.
- Attendance is taken daily for both in-person and distance students.

SCHOOL DAY STRUCTURE

SCHEDULES

Middle (Grades 6-8)

East Avenue

	MONDAY	TUESDAY	WEDNESDAY		THURSDAY	FRIDAY
	Group A- AM On-Campus Group B- AM Distance Group C- AM Distance	Group A- AM On-Campus Group B- AM Distance Group C- AM Distance	All Groups are Distance		Group A- AM Distance Group B- AM On-Campus Group C- AM Distance	Group A- AM Distance Group B- AM On-Campus Group C- AM Distance
			ODD	EVEN		
7:45-8:20	Per 0 Instruction	Per 0 Instruction	Per 0 Online Support		Per 0 Instruction	Per 0 Instruction
8:25-9:20	Per 1 Instruction	Per 2 Instruction	Per 1 Online Instruction	Per 2 Online Instruction	Per 1 Instruction	Per 2 Instruction
9:25-10:20	Per 3 Instruction	Per 4 Instruction	Per 3 Online Instruction	Per 4 Online Instruction	Per 3 Instruction	Per 4 Instruction
10:25-11:20	Per 5 Instruction	Per 6 Instruction	Per 5 Online Instruction	Per 6 Online Instruction	Per 5 Instruction	Per 6 Instruction
11:20-12:00	Lunch	Lunch	Lunch		Lunch	Lunch
12:00-12:30	Per 1 Online Support/ Work	Per 2 Online Support/ Work	Online Homeroom 12:00-12:25		Per 1 Online Support/ Work	Per 2 Online Support/ Work
12:40-1:10	Per 3 Online Support/ Work	Per 4 Online Support/ Work	Early Dismissal/ Staff PD		Per 3 Online Support/ Work	Per 4 Online Support/ Work
1:20-1:50	Per 5 Online Support/ Work	Per 6 Online Support/ Work			Per 5 Online Support/ Work	Per 6 Online Support/ Work

Middle School Schedule Information


- Students participating in In-Person Learning (IP) will be assigned to either Group A or Group B.
- Students participating in 100% Distance Learning (D) will be assigned to Group C.
- Group A students receive instruction in person, on-campus on Monday and Tuesday mornings. Group A participates in distance learning Wednesday - Friday.
- Group B students receive instruction in person, on-campus on Thursday and Friday mornings. Group B participates in distance learning Monday - Wednesday.
- Group C students receive instruction online Monday - Friday mornings.
- All students participate in online support on M, T, Th, F afternoons, as directed by their teacher or when needed. Teachers will be available online during this time.
- On Wednesdays, all students participate in distance learning. Morning online instruction rotates between odd and even schedules each week. On odd weeks, students attend periods 1, 3, and 5 and on even weeks, students attend periods 2, 4, and 6. Weekly Wednesday homeroom is from 12-12:25 pm. (Check school calendar for current information.)
- Off campus lunch is from 11:20 am-12:00 pm Monday- Friday.
- Attendance is taken daily for both in-person and distance students.

SCHOOL DAY STRUCTURE

SCHEDULES

Middle (Grades 6-8)

Joe Michell

	MONDAY	TUESDAY	WEDNESDAY		THURSDAY	FRIDAY
	Group A- AM On-Campus Group B- AM Distance Group C- AM Distance	Group A- AM On-Campus Group B- AM Distance Group C- AM Distance	All Groups are Distance		Group A- AM Distance Group B- AM On-Campus Group C- AM Distance	Group A- AM Distance Group B- AM On-Campus Group C- AM Distance
			BLUE	WHITE		
7:45-8:20	Per 0 Instruction	Per 0 Instruction	Per 0 Online Support		Per 0 Instruction	Per 0 Instruction
8:25-9:10	Per 1 Instruction	Per 5 Instruction	Per 1 Online Instruction	Per 5 Online Instruction	Per 1 Instruction	Per 5 Instruction
9:13-9:58	Per 2 Instruction	Per 6 Instruction	Per 2 Online Instruction	Per 6 Online Instruction	Per 2 Instruction	Per 6 Instruction
9:58-10:08	Break	Break	Break		Break	Break
10:08-10:53	Per 3 Instruction	Per 7 Instruction	Per 3 Online Instruction	Per 7 Online Instruction	Per 3 Instruction	Per 7 Instruction
10:56-11:20	Per 4 Instruction	Per 4 Instruction	Per 4 Online Instruction	Per 4 Online Instruction	Per 4 Instruction	Per 4 Instruction
11:20-12:00	Lunch	Lunch	Lunch		Lunch	Lunch
12:00-1:50	Online Support/ Work	Online Support/ Work	Per 1 Check-in 12:00-12:25		Online Support/ Work	Online Support/ Work
			Early Dismissal/ Staff PD			


Middle School Schedule Information

- Students participating in In-Person Learning (IP) will be assigned to either Group A or Group B.
- Students participating in 100% Distance Learning (D) will be assigned to Group C.
- Group A students receive instruction in person, on-campus on Monday and Tuesday mornings. Group A participates in distance learning Wednesday - Friday.
- Group B students receive instruction in person, on-campus on Thursday and Friday mornings. Group B participates in distance learning Monday - Wednesday.
- Group C students receive instruction online Monday - Friday mornings.
- All students participate in online support on M, T, Th, F afternoons, as directed by their teacher or when needed. Teachers will be available online during this time.
- On Wednesdays, all students participate in distance learning. Morning online instruction rotates between odd and even schedules each week. On odd weeks, students attend periods 1, 3, and 5 and on even weeks, students attend periods 2, 4, and 6. Weekly Wednesday homeroom is from 12-12:25 pm. (Check school calendar for current information.)
- Off campus lunch is from 11:20 am-12:00 pm Monday- Friday.
- Attendance is taken daily for both in-person and distance students.

SCHOOL DAY STRUCTURE

SCHEDULES

Middle (Grades 6-8) Junction Avenue

	MONDAY	TUESDAY	WEDNESDAY		THURSDAY	FRIDAY
	Group A- AM On-Campus Group B- AM Distance Group C- AM Distance	Group A- AM On-Campus Group B- AM Distance Group C- AM Distance	All Groups are Distance		Group A- AM Distance Group B- AM On-Campus Group C- AM Distance	Group A- AM Distance Group B- AM On-Campus Group C- AM Distance
			ODD	EVEN		
7:45-8:20	Per 0 Instruction	Per 0 Instruction	Per 0 Online Support		Per 0 Instruction	Per 0 Instruction
8:25-9:20	Per 1 Instruction	Per 2 Instruction	Per 1 Online Instruction	Per 2 Online Instruction	Per 1 Instruction	Per 2 Instruction
9:25-10:20	Per 3 Instruction	Per 4 Instruction	Per 3 Online Instruction	Per 4 Online Instruction	Per 3 Instruction	Per 4 Instruction
10:25-11:20	Per 5 Instruction	Per 6 Instruction	Per 5 Online Instruction	Per 6 Online Instruction	Per 5 Instruction	Per 6 Instruction
11:20-12:00	Lunch	Lunch	Lunch		Lunch	Lunch
12:00-12:30	Per 1 Online Support/ Work	Per 2 Online Support/ Work	Online Homeroom 12:00-12:25		Per 1 Online Support/ Work	Per 2 Online Support/ Work
12:40-1:10	Per 3 Online Support/ Work	Per 4 Online Support/ Work	Early Dismissal/ Staff PD		Per 3 Online Support/ Work	Per 4 Online Support/ Work
1:20-1:50	Per 5 Online Support/ Work	Per 6 Online Support/ Work			Per 5 Online Support/ Work	Per 6 Online Support/ Work

Middle School Schedule Information

- Students participating in In-Person Learning (IP) will be assigned to either Group A or Group B.
- Students participating in 100% Distance Learning (D) will be assigned to Group C.
- Group A students receive instruction in person, on-campus on Monday and Tuesday mornings. Group A participates in distance learning Wednesday - Friday.
- Group B students receive instruction in person, on-campus on Thursday and Friday mornings. Group B participates in distance learning Monday - Wednesday.
- Group C students receive instruction online Monday - Friday mornings.
- All students participate in online support on M, T, Th, F afternoons, as directed by their teacher or when needed. Teachers will be available online during this time.
- On Wednesdays, all students participate in distance learning. Morning online instruction rotates between odd and even schedules each week. On odd weeks, students attend periods 1, 3, and 5 and on even weeks, students attend periods 2, 4, and 6. Weekly Wednesday homeroom is from 12-12:25 pm. (Check school calendar for current information.)
- Off campus lunch is from 11:20 am-12:00 pm Monday- Friday.
- Attendance is taken daily for both in-person and distance students.

SCHOOL DAY STRUCTURE

SCHEDULES

Middle (Grades 6-8) Mendenhall

 Mendenhall Mustangs	MONDAY	TUESDAY	WEDNESDAY		THURSDAY	FRIDAY
	Group A- AM On-Campus Group B- AM Distance Group C- AM Distance	Group A- AM On-Campus Group B- AM Distance Group C- AM Distance	All Groups are Distance		Group A- AM Distance Group B- AM On-Campus Group C- AM Distance	Group A- AM Distance Group B- AM On-Campus Group C- AM Distance
			ODD	EVEN		
7:45-8:20	Per 0 Instruction	Per 0 Instruction	Per 0 Online Support		Per 0 Instruction	Per 0 Instruction
8:25-9:20	Per 1 Instruction	Per 2 Instruction	Per 1 Online Instruction	Per 2 Online Instruction	Per 1 Instruction	Per 2 Instruction
9:25-10:20	Per 3 Instruction	Per 4 Instruction	Per 3 Online Instruction	Per 4 Online Instruction	Per 3 Instruction	Per 4 Instruction
10:25-11:20	Per 5 Instruction	Per 6 Instruction	Per 5 Online Instruction	Per 6 Online Instruction	Per 5 Instruction	Per 6 Instruction
11:20-12:00	Lunch	Lunch	Lunch		Lunch	Lunch
12:00-12:30	Per 2 Online Support/ Work	Per 1 Online Support/ Work	Online Homeroom 12:00-12:25		Per 2 Online Support/ Work	Per 1 Online Support/ Work
12:40-1:10	Per 4 Online Support/ Work	Per 3 Online Support/ Work	Early Dismissal/ Staff PD		Per 4 Online Support/ Work	Per 3 Online Support/ Work
1:20-1:50	Per 6 Online Support/ Work	Per 5 Online Support/ Work			Per 6 Online Support/ Work	Per 5 Online Support/ Work

Middle School Schedule Information

- Students participating in In-Person Learning (IP) will be assigned to either Group A or Group B.
- Students participating in 100% Distance Learning (D) will be assigned to Group C.
- Group A students receive instruction in person, on-campus on Monday and Tuesday mornings. Group A participates in distance learning Wednesday - Friday.
- Group B students receive instruction in person, on-campus on Thursday and Friday mornings. Group B participates in distance learning Monday - Wednesday.
- Group C students receive instruction online Monday - Friday mornings.
- All students participate in online support on M, T, Th, F afternoons, as directed by their teacher or when needed. Teachers will be available online during this time.
- On Wednesdays, all students participate in distance learning. Morning online instruction rotates between odd and even schedules each week. On odd weeks, students attend periods 1, 3, and 5 and on even weeks, students attend periods 2, 4, and 6. Weekly Wednesday homeroom is from 12-12:25 pm. (Check school calendar for current information.)
- Off campus lunch is from 11:20 am-12:00 pm Monday- Friday.
- Attendance is taken daily for both in-person and distance students.

SCHOOL DAY STRUCTURE

SCHEDULES

High School (Grades 9-12)

	MONDAY	TUESDAY	WEDNESDAY		THURSDAY	FRIDAY
	Group A- On-Campus Group B- Distance Group C- Distance	Group A- Distance Group B- On-Campus Group C- Distance	All Groups are Distance		Group A- On-Campus Group B- Distance Group C- Distance	Group A- Distance Group B- On-Campus Group C- Distance
8:00-8:50	Per 1 Simultaneous Instruction	Per 1 Simultaneous Instruction	8:00-8:40	Per 1 Online Instruction	Per 1 Simultaneous Instruction	Per 1 Simultaneous Instruction
8:57-9:47	Per 2 Simultaneous Instruction	Per 2 Simultaneous Instruction	8:50-9:30	Per 2 Online Instruction	Per 2 Simultaneous Instruction	Per 2 Simultaneous Instruction
9:54-10:44	Per 3 Simultaneous Instruction	Per 3 Simultaneous Instruction	9:40-10:30	Per 3 Online Instruction & ASE/ CAP	Per 3 Simultaneous Instruction	Per 3 Simultaneous Instruction
10:51-11:41	Per 4 Simultaneous Instruction	Per 4 Simultaneous Instruction	10:40-11:20	Per 4 Online Instruction	Per 4 Simultaneous Instruction	Per 4 Simultaneous Instruction
11:48-12:38	Per 5 Simultaneous Instruction	Per 5 Simultaneous Instruction	11:30-12:10	Per 5 Online Instruction	Per 5 Simultaneous Instruction	Per 5 Simultaneous Instruction
12:38-1:15	Lunch	Lunch	12:10-12:45	Lunch	Lunch	Lunch
1:15-3:05	Student Directed Learning	Student Directed Learning	1:15-3:05	Early Dismissal/ Staff PD	Student Directed Learning	Student Directed Learning

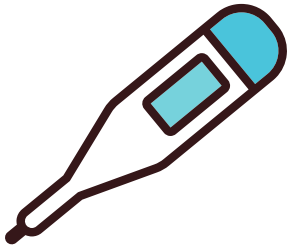
High School Schedule Information

- Students participating in In-Person Learning (IP) will be assigned to either Group A or Group B.
- Students participating in 100% Distance Learning (D) will be assigned to Group C.
- Group A students receive instruction in person, on campus on Monday and Thursday mornings and online instruction Tuesday, Wednesday, and Friday mornings.
- Group B students receive instruction in person, on campus on Tuesday and Friday mornings and online instruction Monday, Wednesday, and Thursday mornings.
- Group C students receive all instruction online Monday - Friday.
- All students have student-directed learning in the afternoons on M, T, Th, F. Students can use this time to complete asynchronous work or email teachers for additional support.
- Students attend shortened periods online for every class each Wednesday due to early dismissal.
- Off campus lunch is from 12:38-1:15 pm on M,T, Th, F and from 12:10-12:45 pm on Wednesdays.
- Attendance is taken daily for both in-person and distance students.

ON-CAMPUS PROTOCOLS

BEFORE SCHOOL

Home Health Screening

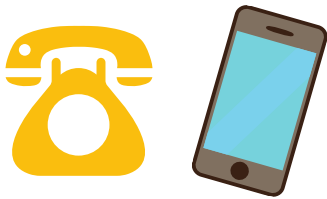


Before coming to school each day, parents and guardians will be expected to conduct a health screening for each student and submit responses to the school using the PowerSchool portal.

The health screening will ask information in the following three areas:

- possible exposure to someone with COVID-19
- symptoms and visual screening for illness including temperature of over 100 degrees

Reporting Absences

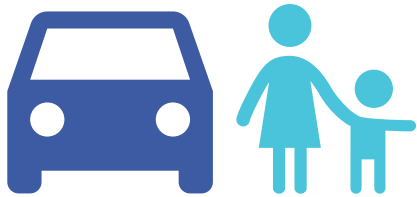


If your child will not be engaged in their daily scheduled learning due to illness or otherwise, please call your school's attendance line. See your school's website for the attendance line phone number.

Attendance will be taken each day and for each period regardless of whether your student is participating in class in person or through distance learning. Not being present for attendance in either scenario will require a cleared absence by a parent or guardian.

ARRIVING TO SCHOOL

Drop-off Procedures



It is recommended that whenever possible, a school's valet drop off route is used to get students to school. This will greatly reduce the number of people on or around our campuses.

If you choose to park and walk your child to campus, you must wear a mask and adhere to 6 feet of physical distance between you and others. Each school will have a designated area for parents and students to stand on the perimeter of school grounds. Unfortunately, we cannot have any visitors (parents included) on campus at this time.

Entrance & Exit Pathways



Each campus will have one-way traffic flow with designated entrances and exits. This may result in the need to alter prior drop-off and pick-up locations you had with your child. Each school will be communicating the specifics of these routes.

Visitor Policy



While we greatly value our parent and community volunteers, we cannot have visitors on our campuses at this time.

If you need to pick up your child from school before scheduled dismissal, please contact your school's office prior to your arrival to make arrangements.

AT SCHOOL

Face Masks & Personal Protective Equipment (PPE)



Cloth Face Masks

Per Alameda County Public Health Guidelines, cloth face masks are required for staff and students preschool - Grade 12 and must be worn except when eating or drinking, with the exception of students who are not able to wear them due to special circumstances such as a developmental or health diagnosis that would limit their ability to wear a face covering.

Students and staff are encouraged to wear their own cloth face masks from home. If a student or staff member forgets their own, a disposable surgical-type mask will be provided.

Face Shields

Staff and students who are unable to wear a cloth face mask may wear a clear face shield, with a cloth drape attached, tucked into the collar of a shirt or tied around the back of the neck, per ACPHD. Clear face shields with a cloth drape may also be worn in place of a cloth face mask for brief instructional periods to avoid potential barriers to phonological instruction.

Physical Distancing



Inside

Each individual should maintain a physical distance of 6' or greater between themselves and others. This includes classrooms, offices, hallways, restrooms, multi-purpose rooms, and other indoor facilities.

Outside

Physical distancing of 6 feet will also be required for outdoor areas such as playgrounds, blacktops, fields, and outdoor walkways.

AT SCHOOL

Classroom Modifications



Shared Space Modifications



Desks

Student desks will be arranged so there is 6 feet of distance between students.

Supplies

Each student will have a labeled container of school supplies to use while at school.

Community containers of supplies will not be available.

Shared Learning Materials

The use of shared learning materials will be minimized as much as possible. Items that are used will be collected and sanitized between uses. These include materials such as phonics and math manipulatives, Chromebooks, & lab equipment.

Libraries

Students will be able to visit the library and check out materials. Returned materials will be sanitized to the extent possible and will be held for 24 hours before being re-shelved. Library hours will be limited; schools will communicate details.

Computer Labs & Makerspaces

Both computer labs and makerspaces will be closed until further notice. Those students in need of computer access will be issued a District Chromebook to use at home.

AT SCHOOL

Shared Space Modifications (con't)



MPR

At this time, we will not be using these spaces for assemblies or lunch service.

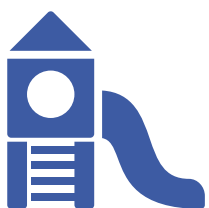
Music Rooms

According to the CDC and ACPHD, music and choir are categorized as high risk due to the quantity of airborne microbes produced during these activities. Most music classes will be conducted online. Those that can be offered will be conducted outdoors or indoors with adherence to Public Health guidelines.



School Offices

Visiting school offices will be by appointment only. Offices will have drop boxes outside for collection of documents and other materials.



Play Structures & Playgrounds

Access to play structures and playground equipment will be rotated between groups. Physical distancing between students will be monitored.

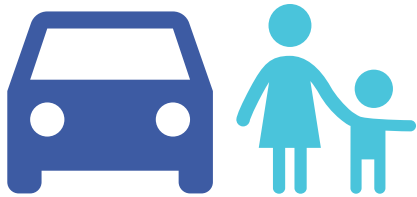


Restrooms

Floor markings & signage will remind students of physical distancing and handwashing protocols. Soap dispensers will be filled daily to ensure adequate supply.

LEAVING SCHOOL

Pick-Up Procedures



It is recommended that whenever possible, a school's valet route is used to pick-up students from school. This will greatly reduce the number of people on or around our campuses. Each school will share its specific pick-up procedures.

If you choose to park and walk to campus to meet your child, you must wear a mask and adhere to 6 feet of physical distance between you and others. Unfortunately, we cannot have parents pick-up students on the interior of the campus. Each school will have designated areas for parents to wait for their children on the perimeter of school grounds.

Entrance & Exit Pathways



Each campus will have one-way traffic flow with designated entrances and exits. This may result in the need to alter prior drop-off and pick-up locations you may have used in the past. Each school will be communicating the specifics of these routes.

Childcare (ESS/PAL)



Before and after school programs are provided through the Livermore Area Recreation & Park District (LARPD). For more information about childcare offerings, please contact LARPD at 925-373-5700 or visit their website at www.larpd.org.

SPECIAL EDUCATION

Like general education students, special education students were given the option to return to in-person learning as well as remain in distance learning. Special education supports and services will continue to be provided both on and off campus. If you have questions about educational services and supports for your child, please contact the Special Education Department.

IEPs



IEP meetings will continue to be conducted virtually. Meetings will be set-up to accommodate parent schedules as much as possible.

Initial, annual, and triennial IEP meetings will remain on schedule.

Free & Appropriate Public Education



Regardless of whether a student attends school in-person or through distance learning, it is the expectation that the minutes listed on the IEP are fulfilled, including support from related service providers that will include a combination of in-person instruction, online meetings with families and students, and breakout sessions.

Resource Teachers & Paraprofessional Support



Resource teachers and paraprofessionals will meet all required minutes listed in an IEP by supporting in-person and distance students through a combination of in-person instruction, online meetings with families and students, breakout rooms for those in need of reading or math intervention, and check-ins with students to ensure they are turning in assignments on time.

SPECIAL EDUCATION

(continued)

Additional Safety Considerations



All paraprofessionals and teachers will be provided safety gear, including face shields, face masks, and gloves.

Classrooms will also have face masks and face shields available for students when needed.

Transportation



All students that qualify for transportation will receive it if returning to sites for in-person instruction.

LVJUSD is working closely with our transportation providers to ensure all health and safety protocols are followed during the pick-up and drop-off of students.

STUDENT & FAMILY SUPPORT

CHILD NUTRITION

A pandemic waiver allows our Child Nutrition Department to provide lunch, dinner and snack to all Livermore youth 18 & under, at no cost.

In-Person Students

Students participating in in-person instruction can elect to receive free grab-and-go meals. On days students are on campus, they will receive a lunch to take home with them when school is dismissed. On days when students are not on campus, students can come to their school at the start of lunch to pick up a meal. This process applies to Mondays, Tuesdays, Thursdays, and Fridays. See below for Wednesday meal availability. If you did not elect to receive grab-and-go meals and would like to, please contact our Child Nutrition Department at childnutrition@lvjUSD.org.

Distance Students

Students participating in 100% distance learning can elect to receive free 7-day grocery boxes to provide food for students each week. Boxes are available for pick-up on Friday afternoons at either Junction K-8 or Christensen Middle School. To prevent food spoilage, these boxes must be requested in advance. If you have not already elected to receive one, please contact our Child Nutrition Department at childnutrition@lvjUSD.org.

Wednesday Meals

11:30am - 12:30pm



Wednesday meal kits, that include food for the weekend as well, will be available for pick-up from 11:30-12:30 at the following sites:

- Arroyo Seco Elementary
- Christensen Middle
- East Avenue Middle
- Granada High School
- Jackson Avenue Elementary
- Joe Michell K-8
- Junction K-8
- Livermore High School
- Marilyn Avenue Elementary
- Rancho Las Positas Elementary

Find additional Child Nutrition information on our website at www.livermoreschools.org/childnutrition

Note: Due to our consolidation of school sites serving meals, your child does not need to be enrolled at the school in order to pick up a meal.

STUDENT & FAMILY SUPPORT

MENTAL HEALTH SUPPORTS

Kid Connection



The Kid Connection, a Tier 2 Social Emotional Learning Program, provides social emotional and behavioral student support at all of our elementary & K-8 schools. Each school's website has an online portfolio of videos for all students and parents to access when needed. Topics of videos include being aware of your emotions, dealing with anger, dealing with boredom, emotional regulation/ self-control, setting goals, & solving problems. Videos are also available on our District website.

Counseling



For students in middle and high school, our counselors will be available for student support. Counselors will be meeting with students one-on-one, organizing small-group sessions, and conducting outreach to students to provide support. Each student's schedule has blocks of student-directed learning time that can be used to arrange appointments for support. A list of counselors by school can be found on our [Student Support](#) page.

Mental Health Website



[LVJUSD's Mental Health Website](#) is a vetted resource of information on mental health disorders and protective factors that can help to prevent a decline in the mental health of our students. We have included, and continue to update, information directly related to challenges associated with COVID-19 and its impact on the mental health of our students and families. You will find articles, videos, and book recommendations to aid in opening up a dialogue between you and your child.

STUDENT & FAMILY SUPPORT

MENTAL HEALTH SUPPORTS (CONTINUED)

Care Solace



Care Solace is an online resource with a live, 24/7 concierge line that assists individuals in finding local mental health related programs and counseling services. Access to Care Solace is available to our students, staff, and families at no cost. Care Solace does not require a user's name, address, phone number, or date of birth. All of the information that is entered in on their platform is completely confidential and stored securely.

<https://caresolace.com/site/lvjusdfamilies>

Community Partners



Our district works collaboratively with mental health agencies in our community to facilitate referrals and coordination of services. You can find a list, along with contact information and details of services on our [Mental Health Community Partners](#) page.



STUDENT & FAMILY SUPPORT

LIVERMORE LEARNS PARENT EDUCATION



Livermore Learns is a parent education program designed to educate, inform, and engage parents and guardians as they support their children throughout their education. Livermore Learns provides workshops, presentations, trainings, book clubs and webinars to help provide this education and support.

Spring Programming

Our spring programming focuses on helping parents reassess where their children are at mentally and emotionally as they move through their final trimester of the 2020-21 school year. Topics include:

- March 11: *Motivating Your Child*
- March 17: *Supporting Children Returning to In-Person Learning (Eng & Span)*
- March 18: *Mental Health Impacts of Social Media & Screen Use*
- April 22: *Mental Health Impacts of Vaping, Nicotine & Marijuana*

Webinars will include presentations of information from content experts including LVJUSD counselors, psychologists, and behaviorists, as well as community partner professionals. Each webinar will include time for Q&A and participant sharing.

For those unable to attend a live webinar, presentation content and any additional resources on the topic presented will be available on the [Livermore Learns](#) section of our website.

Pre-register for Livermore Learns events on our district's homepage calendar.

HEALTH, SAFETY & SANITATION

PROTOCOLS

Facility Preparation



In order to have classrooms ready for occupancy, our Maintenance Department has been cleaning school buildings with the following detail:

- All furniture thoroughly cleaned
- Carpets scrubbed and extracted
- Tile floors stripped and resealed
- High areas wiped clean
- Surfaces cleaned and disinfected

HVAC & Ventilation



Prior to students and staff returning to campus:

- Thermostat programming will be adjusted to pre-ventilate classrooms with outside air
- Outside air dampers will be set to increase outside air flow into classrooms
- MERV 13 filters have been installed in every HVAC unit
- Door sensors will be disabled to allow for open doors to increase air flow

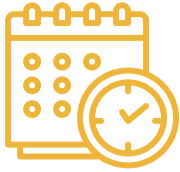
Ongoing maintenance includes:

- Scheduled filter replacements

HEALTH, SAFETY & SANITATION

PROTOCOLS

Frequency



Daily

- Classrooms, work spaces, multi-purpose rooms & restrooms will receive a thorough cleaning and disinfecting each day to include all soiled surfaces, touch points, floors.
- Electrostatic sprayer as needed
- Needed restocking of hand sanitizer, soap, & paper towels

Electrostatic Spraying



In addition to standard cleaning and manual disinfecting procedures, custodians will routinely use electrostatic spraying, a process that emits positively charged particles that “wrap around” surfaces and uniformly disinfects the harder to reach areas. This product dries 5-10 minutes after application.

In the Event of a Positive COVID Case



In the event of a positive COVID-19 case or outbreak in classroom, the following protocols will be followed:

- Immediately close the space or spaces where the student/staff member was working, and keep closed for 24 hours
- After 24 hours, a custodian in full PPE will thoroughly clean & disinfect classroom, including all desks, chairs, sinks, counters, & floors
- Use the electrostatic sprayers to apply disinfectant

RESPONSE TO CONFIRMED OR SUSPECTED COVID-19 CASES & CLOSE CONTACTS

Scenario	Immediate Actions	Communication
<p>1 A student or staff member:</p> <ul style="list-style-type: none"> • exhibits COVID-19 symptoms • answers “yes” to a health screening question, OR • has a temperature of 100.0 or above. 	<ul style="list-style-type: none"> • Student/staff sent home • Isolate student/staff in designated area pending pick up • Advise student/staff to contact healthcare provider & consider testing • Advise student/staff to share test results with school administrator 	<p>No action needed</p> <p>Stable Group/School remain OPEN</p>
<p>2 A student or staff member has close contact (†) with a confirmed COVID-19 case.</p>	<ul style="list-style-type: none"> • Student/staff sent home • Exclude from school for 10 days from last exposure, per <u>CDC quarantine recommendations</u>. • Recommend testing 5-7 days from last exposure (but will not shorten 10-day exclusion if negative). 	<p>No action needed</p> <p>Stable Group/School remain OPEN</p>
<p>3 A student or staff member tests positive for COVID-19.</p>	<ul style="list-style-type: none"> • Contact Alameda County Public Health Department • Exclude from school for 10 days from symptom onset date or, if asymptomatic, for 10 days from specimen collection date. • Identify school contacts (†), inform the ACPHD of identified contacts and exclude contacts (possibly the entire stable group (††) from school for 10 days after the last date the case was present at school while infectious. • Recommend testing asymptomatic contacts 5-7 days from last exposure and immediate testing of symptomatic contacts (negative test results will not shorten 10-day exclusion) • Clean & disinfect classroom and primary spaces occupied for more than 15 minutes by positive student or staff 	<p>School community notification of a known case.</p> <p>Notifications of persons with potential exposure if case was present in school while infectious</p> <p>School remains OPEN</p>

RESPONSE TO NEGATIVE COVID-19 TEST RESULTS

Scenario	Immediate Actions	Communication
<p>4 A symptomatic student or staff member tests negative for COVID-19 or a healthcare provider has provided documentation that the symptoms are typical of their underlying chronic condition</p>	<p>The student/ staff can return after:</p> <ul style="list-style-type: none">• 24 hours with no fever and symptoms have started improving.	<p>No action needed</p> <p>Stable Group/ School Remain OPEN</p>
	<p>(†) A contact is defined as a person who is within 6 feet from a case for more than 15 minutes cumulative within a 24-hour period, regardless of face coverings. In some school situations, it may be difficult to determine whether individuals have met this criterion and an entire stable group, classroom, or other group may need to be considered exposed, particularly if people have spent time together indoors.</p> <p>(††) See Stable Group Guidance for definition of a stable group. In some situations, (e.g., when seating charts are used, face covering is well adhered to, and teachers or staff have observed students adequately throughout the day), contact tracing and investigation may be able to determine more precisely whether each stable group member has been exposed. In this situation, those who were not close contacts could continue with in-person instruction.</p>	

APPENDIX A - LVJUSD Resources

Livermore Valley Joint Unified School District's

Communication Guide

Supporting student achievement & parent engagement through clear & comprehensive communication



LIVERMORESCHOOLS.ORG is our district website and home to all of the news, announcements, calendars, and operations of our district. Learn about district-wide initiatives or select your child's school to find school-site information.



LIVERMORESCHOOLS MOBILE APP brings the information from our website to your fingertips! Customize your app by following the schools that are important to you. App translates to 70 languages. Download for free at Google Play or Apple App store.



FACEBOOK @livermoreschools is our community bulletin board. Posts about District & community events, educational & enrichment opportunities for students, parent education forums, and mental health & wellness resources are provided to support our students and families beyond the classroom.



INSTAGRAM @livermoreschools shows learning in action, what's behind the scenes or behind the classroom door. Our pictures tell a story about our schools, staff, and students.



TWITTER @livermoreschool is where you can find District press releases, retweets of local & national information related to student achievement, and current information about legislation & governance affecting education.



PEACHJAR is the hub for electronic flyers announcing upcoming events, on-campus activities, enrichment programs, scholarships, fundraisers, sports, and more! Accounts are school-specific with tailored information for each audience. Receive updates via email or on the Livermoreschools Mobile App.



THE GRAPEVINE is our superintendent's monthly newsletter. Dr. Kelly Bowers shares exciting news from our district featuring student achievements, Board recognitions, and school site programs, special events, and accomplishments. For a Grapevine archive, visit livermoreschools.org/grapevine.

APPENDIX B - Additional Resources

Included below are links to local, State, and federal government agencies that report on and provide guidance on the state of the pandemic and how it relates to school operations.



Alameda County Public Health Department (ACPHD)



California Department of Public Health (CDPH)



Alameda County Office of Education (ACOE)



California Department of Education (CDE)



CA.gov COVID-19 Website



Centers for Disease Control & Prevention (CDC)